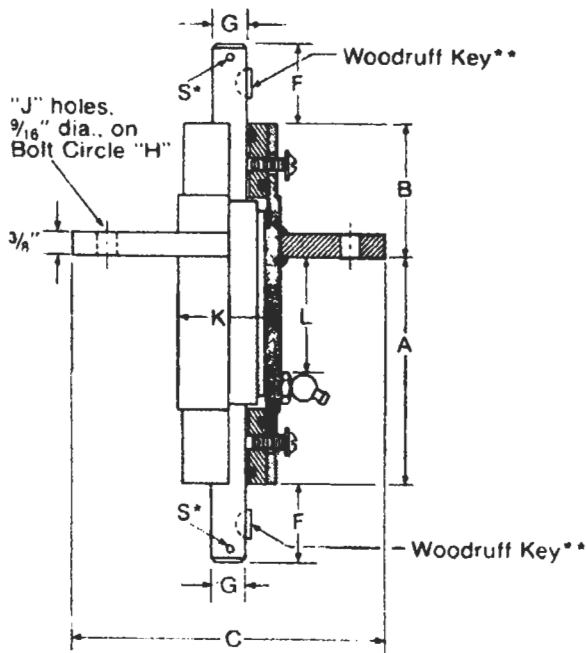
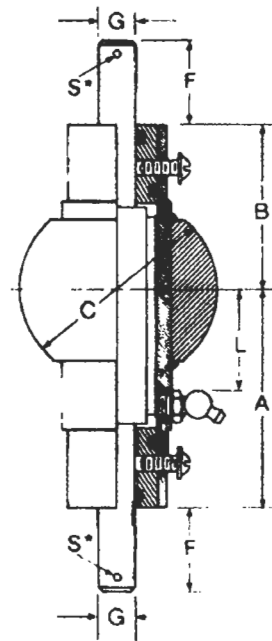


Intermediate Connections



with bolting flange.



with welding collar.

**S* hole to be drilled and pinned to mating part by customer. (See taper pin table, pg. 50.)

Bill of Materials

Bolting Flange Number	Shaft Core Dia.	A	B	C (Dia.)	F	G	H (B.C.)	J	K	L Max. Deck Thick.	Reference Model Number	Reference Navy Stock Number
9238-534	1/2	3 1/2	2 1/4	4 1/2	3/4	3/8	3 3/8	4	1 3/8	1 1/16	9238-SM3-4	1H2040-00-388-0865
9238-533	3/4	3 3/8	2 1/4	5 1/16	1 1/16	9/16	3 1 1/16	6	1 3/8	1 1/16	9238-SM3-3	1H2040-00-388-0864
9238-532	1	3 7/8	2 1/4	5 9/16	1 1/16	3/4	4 7/16	6	2	1 3/16	9238-SM3-2	1H2040-00-388-0863
9238-531	1 1/4	4 1/8	2 1/4	5 9/16	1 1/16	1	4 7/16	6	2 1/4	2 1/16	9238-SM3-1	1H2040-00-388-0862
9238-530	*1 1/8	5	2 7/8	6 1/8	1 1 1/16	1 1/8	5	6	2 3/4	2 3/8	9238-SM3-0	1H2040-00-388-0861

Description	Material	SM3	SM5
Flange	Steel	•	•
Groove Pin	Steel	•	•
Bushings	Mn. Bronze	•	•
Taper Pins. (Qty.-2)	Steel	•	•
Woodruff Key	Steel	•	•
Housing	Steel	•	•
Spindle	Steel	•	•
"O" Ring	Syn. Comp.	•	•
Screw	Brass	•	•
Collar	Steel	•	•

Welding Collar Number	Shaft Core Dia.	A	B	C	F	G	L Max. Deck Thick.	Reference Model Number	Reference Navy Stock Number
9054-554	1/2	3 1/16	2 1/16	2 1 1/16	3/4	3/8	1 1/16	9054-SM5-4	1H2040-00-388-0850
9054-553	3/4	3 1/4	2 5/8	2 1 1/16	1 1/16	9/16	1 1/16	9054-SM5-3	1H2040-00-388-0849
9054-552	1	3 3/8	2 3/4	3 5/16	1 1/16	3/4	1 3/16	9054-SM5-2	1H2040-00-388-0848
9054-551	1 1/4	3 1/2	2 7/8	3 1 1/16	1 1/16	1	2 1/16	9054-SM5-1	1H2040-00-388-0847
9054-550	*1 1/8	4 1/4	3 5/8	4 5/16	1 1 1/16	1 1/8	2 3/8	9054-SM5-0	1H2040-00-388-0846

*1 1/8" sizes available only as non-standard.