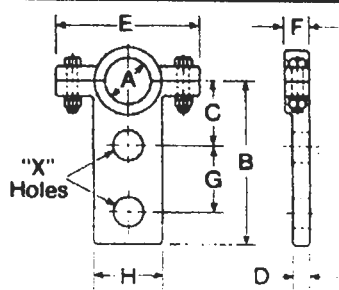
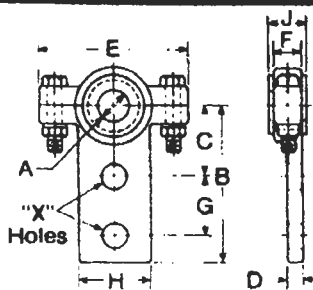


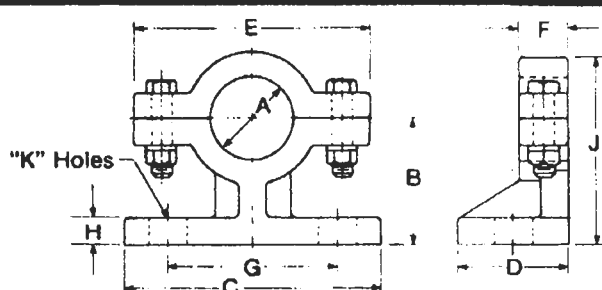
Shaft Hangers



Type SHS



Type SHS
with Nylon Bushing



Type SHPO

TYPE SHS

Rod Dia.	Number	A	B	C	D	E	F	G	H	X Holes	Reference Part Number
1/2	50135-508	.505	3 1/8	1 1/4	3/8	2 5/8	9/16	1 3/8	1 11/32	1/2	SHS-1A
5/8	50135-510	.630	3 3/4	1 1/2	3/8	3 1/4	9/16	1 1/2	1 9/16	1/2	SHS-2A
3/4	50135-512	.755	3 1/2	1 1/2	3/8	3 1/4	9/16	1 1/2	1 9/16	1/2	SHS-3A
1	50135-516	1.005	4	1 3/4	3/8	3 3/4	1 1/16	1 1/2	1 13/16	1 1/16	SHS-4A
1 1/4	50135-520	1.255	4	1 5/8	3/8	4 1/4	1 3/16	1 1/2	1 13/16	1 1/16	SHS-5A
1 1/2	50135-524	1.505	4 1/8	1 7/8	1/2	4 1/2	1 3/8	1 1/2	1 13/16	1 1/16	SHS-6A
1 3/4	50135-528	1.755	4 1/4	1 7/8	1/2	4 3/4	1 11/16	1 1/2	1 13/16	1 1/16	SHS-7A
2	50135-532	2.005	5 1/2	2 5/8	5/8	6 1/4	2	2	2 9/16	1 1/16	

Type SHS with Nylon Bushing

Rod Dia.	Number		A	B	C	D	E	F	G	H	J	X Holes
	Malleable Iron	Aluminum Bronze										
1/2		15902-613	.505 .515	3 3/8	1 1/4	3/8	2 5/8	9/16	1 3/8	1 11/32	.97	1/2
3/4	15902-601	15902-605	.755 .765	4	1 3/4	3/8	3 3/4	1 1/16	1 1/2	1 3/4	.97	1 1/16
1	15902-602	15902-606	1.005 1.015	4	1 3/4	3/8	3 3/4	1 1/16	1 1/2	1 3/4	.97	1 1/16
1	15902-609	15902-611	1.005 1.015	3 27/32	1 5/8	3/8	4 1/4	1 3/16	1 1/2	1 19/16	1.09	1 1/16
1 1/4	15902-603	15902-607	1.255 1.265	4 1/8	1 7/8	1/2	4 1/2	1 3/8	1 1/2	1 19/16	1.66	1 1/16
1 1/2	15902-604	15902-608	1.505 1.515	4 1/8	1 7/8	1/2	4 1/2	1 3/8	1 1/2	1 19/16	1.66	1 1/16
1 1/2	15902-610	15902-612	1.505 1.515	4 1/8	1 7/8	1/2	4 3/4	1 11/16	1 1/2	1 19/16	1.97	1 1/16

TYPE SHPO

Rod Dia.	Number	A	B	C	D	E	F	G	H	J	K Holes	Reference Part Number
1/2	50128-508	.505	1 13/16	3 3/8	1 1/2	2 5/8	3/4	2 1/2	5/16	2 1/2	7/16	SHPO-1A
3/4	50128-512	.755	1 7/8	4	1 1/2	3 1/4	5/8	2 5/8	7/16	2 11/16	1 1/16	SHPO-2A
1	50128-516	1.005	2 5/16	4 1/4	1 3/4	3 7/8	1 1/16	2 7/8	1/2	3 3/8	1 1/16	SHPO-3A
1 1/4	50128-520	1.255	2 1/4	4 1/2	2	4 5/16	1 3/16	3 1/16	1/2	3 1/2	1 1/16	SHPO-4A
1 1/2	50128-524	1.505	2 9/16	5 1/16	2	4 9/16	1 9/16	3 1/2	1/2	3 3/4	1 1/16	SHPO-5A
1 3/4	50128-528	1.755	2 15/16	5 1/8	2	4 7/8	1 45/64	3 1/2	7/16	4 3/8	1 1/16	SHPO-6A

Bill Of Materials

Description	Material	Type SHS	Type SHPO
Hanger	Alum. Bronze	•	•
Cap	Alum. Bronze	•	•
Screws*	Steel	•	•
Washers*	Steel	•	•
Nuts*	Steel	•	•

*Same for Type SHS with Nylon Bushing.